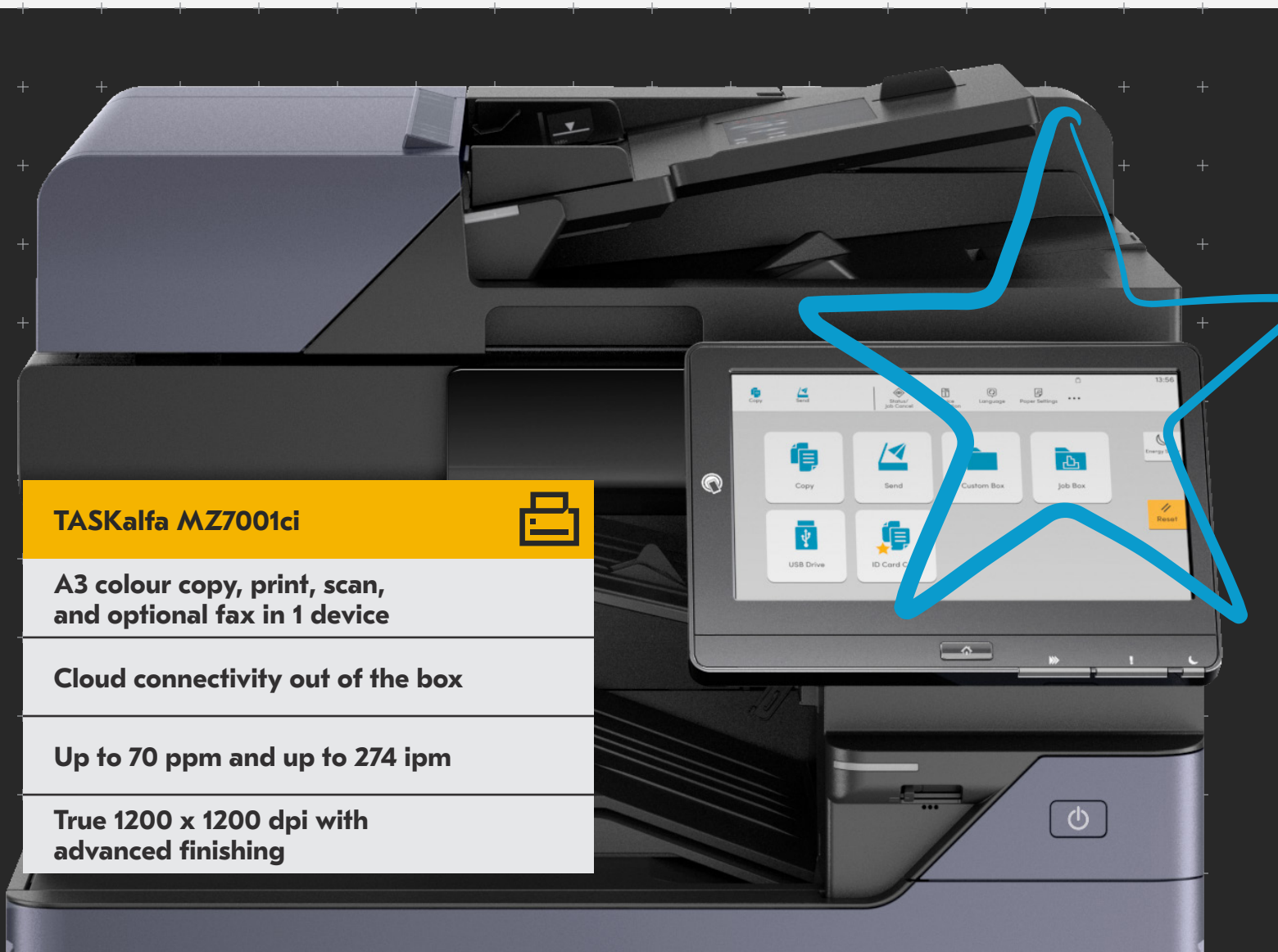


The sky's the limit

EvolutionNext is our follow up to the Evolution Series. With award-winning reliability, advanced security, and versatile finishing options, our sustainable design will help your business thrive.



TASKalfa MZ7001ci



**A3 colour copy, print, scan,
and optional fax in 1 device**

Cloud connectivity out of the box

Up to 70 ppm and up to 274 ipm

**True 1200 x 1200 dpi with
advanced finishing**

TASKalfa MZ7001ci

BASIC SPECIFICATIONS

Configuration: Colour MFP - Print/Copy/Scan/Optional Fax
Speed: Letter: 70 ppm, Legal: 42 ppm, Ledger: 35 ppm (print only)

Warm Up Time: 25 seconds or less

First Page Out:

Copy: 3.4 seconds BW, 4.4 seconds Colour

Print: 3.7 seconds BW, 5.0 seconds Colour

Display: 10.1" Colour Touch Screen Control Panel

Memory/Hard Disk Drive: 4G RAM/ 256GB SSD Standard, 1TB HDD (option)

Duplex: Standard Stackless Duplex supports Statement (5.5" x 8.5") to Ledger (12" x 18"), 16 lb. Bond - 142 lb. Index (60 - 256gsm)

Standard Output Tray: Statement - 12" x 18"/500-sheets;

up to 12" x 48" Banner (single sheet)

Electrical Requirements: 120V, 60Hz, 16A;

220-240V, 50/60Hz, 10A

Typical Electricity Consumption (TEC): 120V: 1.05 kWh/week; 220V: 1.01 kWh/week

Dimensions: 23.7" W x 26.1" D x 31.1" H

Weight: 209.4 lbs

Maximum Monthly Duty Cycle: 200,000 Pages per Month

PAPER SUPPLY

Paper Capacity: Standard 1,150-sheets; Maximum 7,150-sheets

Standard Paper Sources: Dual 500-sheet Trays,

150-sheet MPT, Auto Selection/Switching

Standard Paper Size:

Tray 1 - 5.5" x 8.5" - 8.5" x 14" (statement to legal)

Tray 2 - 5.5" x 8.5" - 12" x 18", Custom Size

MPT: 5.5" x 8.5" - 12" x 18" (multiple); to 12" x 48" Banner

(single)

Optional Paper Sources:

PF-7140 Dual 500-sheet Tray Option - 5.5" x 8.5" - 12" x 18"

PF-7150 Dual 1,500-sheet Tray Option - 8.5" x 11"

PF-7120 3,000-sheet Large Capacity Tray Option - 8.5" x 11"

Paper Weight:

Trays/MPT: 14 lb. Bond - 166 lb. Index (52 - 300gsm)

Input Materials: Standard/Optional Trays: Plain, Bond, Recycled, Preprinted, Vellum, Colour, Pre-Punched, Thick, Thin, High Quality, Letterhead, Envelope, Custom; MPT: Plain, Bond, Recycled, Preprinted, Vellum, Colour, Pre-Punched, Thick, Thin, High Quality, Transparency (OHP), Coated, Index Tab, Label, Letterhead, Envelope, Custom

SECURITY SPECIFICATIONS

Guarded Access: LDAP, IP Filtering, Secure Print Release, SMTP Authentication, Create Encrypted PDF, Failed Authentication Lockout, Card Authentication.

Protected Data Storage: SSD/HDD Overwrite, AES 256 Data Storage Encryption, Trusted Platform Module, IEC-15408, Common Criteria, IEEE 2600 Certified, HCD-PP Certified.

Secure Communication: TLS v1.3, SMB 3.1.1, HTTPS, ECDSA, FIPS 140-3 Encryption, S/ MIME, IPSec with HCD-PP, IPPS Printing (Over TLS), SCEP Certificated Enrollment, OCSP/CRL Certificates, 802.1X Ethernet Certificates, SHA 2 384.

Advanced Management: 3 Preset Security Level Configurations, Remote Management of Fleet, SNMP v3 Monitoring, SIEM/Syslog Monitoring, Secure Boot Check, Run Time Integrity Checks, Allow List.

PRINT SPECIFICATION

Standard Controller: ARM Cortex-A53/1.6GHz

PDLs/Emulations: PCL6 (PCL XL/PCL 5c); PRESCRIBE, KPDL3

(PostScript3 compatible) AES Support, PDF, XPS/OpenXPS,

PPML, Microsoft WPP and Universal Print

Print Resolution: Up to 4800 x 1200 dpi

Fonts: 93 Fonts (PCL6), 136 Fonts (KPDL3), 4 Fonts (Calibri), 4

Fonts (Cambria), 1 Font Bitmap font, 79 Outline fonts

OS Compatibility: Windows: 10/11; Server 2016/Server 2019/

Server 2022/Server 2025; Mac OS X v10.0 or later; Chrome OS

Mobile Printing: Apple AirPrint®, Mopria®, Kyocera Cloud

Print and Scan (KCPS), KYOCERA Mobile Print, & KYOCERA

MyPanel

Interfaces: 1000Base-T/100Base-Tx/10BASE-T (IPv6, IPv4,

IPSec), IEEE 802.3az; Other Standard: USB 2.0 (Hi-Speed USB),

USB 3.0 (Super-Speed USB)

IEEE 802.11b/g/n Wireless LAN (supports up to 98.5 feet);

Optional: IEEE 802.11a/b/g/n/ac (**IB-37** for 2.4/5GHz - Add

IB-38 for 2.4GHz), 10/100/1000BaseTX (**IB-53** for Dual NIC);

IEEE 802.11b/g/n (**IB-51** for Wireless LAN Interface (supports

up to 328.1 feet)

Network Print and Supported Protocols: HTTP, FTPS, SNMP

v1/v2c/v3, Raw Port (Port 9100) TCP/IP, IPv4, IPv6, DHCP LPR,

DNS, WSD Scan/Print

Drivers: KX Driver, PCL Mini Driver, KPDL Mini Driver,

Network Fax Driver, TWAIN Driver, WIA Driver, Status Monitor,

Common Profile, Output to PDF, Security Watermark, Super

Resolution, Colour Optimizer, MAC Driver, Chrome Print Driver,

Linux Driver, KX Driver with Distributed Printing,

Windows Inbox Driver, SANE Driver

Utilities: KYOCERA Net Viewer, KYOCERA Net Device

Manager, Quick Setup, KX PRESCRIBE Macro Generator,

ID Register, Software Management Service, Upgrade Studio,

Web Package Maker, Removal Tool, Wi-Fi Setup Tool,

PDF Direct Print, Command Center RX;

Kyocera Net Manager (option)

SCAN SPECIFICATION

Scan Type: Colour and Black & White Scanner

Scan Resolution: 600/400/300/200 dpi, 200 x 100 dpi,

200 x 400 dpi

File Formats: TIFF, JPEG, XPS, OpenXPS, PDF, Searchable PDF,

MS Office File

Connectivity/Supported Protocols: 10 BASE-T/100

BASE-TX/1000 BASE-T (IPv6, IPv4, IPSec) TCP/IP,

Hi-Speed USB 3.0

Scanning Functions: Scan-to-Folder (SMBv3), Scan-to-Email,

Scan-to-FTPS over TLS, Scan-to-USB, WSD Scan,

DSM/SANE Scan, TWAIN Scan, Specified Colour Removal,

Border Erase, Preview, PDF Digital Signatures

Original Size: Up to 11" x 17" (Glass)

Drivers: TWAIN/WIA/DSM-SANE Driver/WSD Scan

OPTIONAL DOCUMENT PROCESSORS²

Acceptable Originals: 5.5" x 8.5" - 11" x 17"

DP-7150: Reverse Auto Document Processor/140-sheets

Speed: Simplex: 80 ipm; Duplex: 48 ipm (BW/Colour)

Weight: Simplex: 13 lb. Bond - 90 lb. Index (35 - 160gsm)

Duplex: 16 lb. - 32 lb. Bond (50 - 120gsm)

DP-7160: Dual Scan Document Processor/320-sheets

Speed: Simplex: 137 ipm; Duplex: 274 ipm (BW/Colour)

Weights: Simplex: 13 lb. Bond - 120 lb. Index (35 - 220gsm)

Duplex: 16 lb. - 120 lb. Index (50 - 220gsm)

DP-7170 (with multi-feed and staple detection):

Dual Scan Document Processor/320-sheets

Speed: Simplex: 137 ipm; Duplex: 274 ipm (BW/Colour)

Weights: Simplex: 13 lb. Bond - 120 lb. Index (35 - 220gsm)

Duplex: 16 lb. - 120 lb. Index (50 - 220gsm)

COPY SPECIFICATIONS

Copy Resolution: 600 x 600 dpi

Image Mode: Text, Photo, Text/Photo, Graphic/Map

Continuous Copy: 1 - 9,999

Additional Features: Auto Magnification, Auto Paper Select,

Combine Copy, Mirror Image, Rotate Copy, Border Erase, Split

Copy, Margin Shift, Page Number, Form Overlay,

Blank Page Skip, Specified Colour Removal, Proof Copy,

Preview, ID Card Copy

Job Management: 1,000 User Codes, Job Build, Shortcut Keys,

Repeat Copy

Magnification/Zoom: Full Size, 4 Reduction, 4 Enlargement

Preset Ratios, 25 - 400% in 1% Step Increments

Document Box: Custom/Job/USB Drive Box, Fax Box

(w/option)

OPTIONAL FAX SPECIFICATIONS

Fax Type: Fax System (option)

Type/Data Compression: G3 Fax/MMR, MR, MH, JBIG

Transmission Speed/Modem Speed: Less than

3 seconds/33.6 Kbps

Fax Memory: Standard 170 MB

Driver: Network Fax Driver

Fax Functions: Network Fax, Duplex Transmission and

Reception, Encrypted Transmission and Reception,

Polling Transmission and Reception, Broadcast,

Fax Server Integration, Fax Dedicated Paper Feed Tray,

Fax Forwarding to email or file

SOLUTIONS AND SERVICES

Remote Management

Kyocera Fleet Services ready! A highly secure cloud-based

monitoring solution that offers real-time visibility into your

fleet. Optimize device uptime and be notified when to

replenish supplies. Streamline billing with seamless 3rd party

application integration, allowing you to focus solely on

your business.

Printing Software

Cost Control & Security

Cloud & Mobile

Printer Management

Content Services

Scan & Connect

Intelligent Process Automation

Enterprise Content Management

IT Solutions

Technology Solutions

Including solutions for Cloud and Data Centers

Network Infrastructure

Cybersecurity Solutions

Collaboration Solutions

Consulting Services

Including IT Health Check

CIO as a Service

Healthcare Compliance

Backup and Recovery Planning

Professional Services

Including Design and Architecture

Project Implementation

Project Management

Managed Services

Including Help Desk Services

Retainer Services and On-site Support

Cloud Ready Services:

Kyocera Cloud Capture (KCC), Kyocera Cloud Information

Manager (KCIM), Kyocera Cloud Print and Scan (KCPS)

Output & Finishing Options³

OPTIONAL 250 SHEET INNER SHIFT TRAY JS-7100

Stack Capacity: 250-sheets

Paper Size: 8.5" x 11" – 11" x 17"

Paper Weight: 14 lb. Bond – 166 lb. Index (52 – 300gsm)

OPTIONAL 1,000 SHEET FINISHER DF-7120₄

Stack/Staple Capacity: Main Tray: 1,000-sheets/50-sheets (up to 24 lb. Bond [90gsm])

Paper Size: 5.5" x 8.5" – 12" x 18"

Paper Weight: 14 lb. Bond – 166 lb. Index (52 – 300gsm)

Edge Staple Position: 3 Positions: Top Left, Bottom Left, Center Bind

Optional Punch: PH-7A 2/3 Hole Punch Unit, supports 5.5" x 8.5" – 12" x 18"; 14 lb. Bond – 166 lb. Index (52 – 300gsm)

Dimensions: 21.6" W x 24.4" D x 41.3" H

OPTIONAL 4,000 SHEET FINISHER DF-7140₄

Stack/Staple Capacity: Main Tray (A): 4,000-sheets; Sub Tray (B): 200-sheets/65-sheets (up to 24 lb. Bond [90gsm])

Paper Size: 5.5" x 8.5" – 12" x 18"

Paper Weight: 14 lb. Bond – 166 lb. Index (52 – 300gsm)

Edge Staple Position: 3 Positions: Top Left, Bottom Left, Center Bind

Optional Punch: PH-7A 2/3 Hole Punch Unit, supports 5.5" x 8.5" – 12" x 18"; 14 lb. Bond – 166 lb. Index (52 – 300gsm)

Dimensions: 29" W x 26" D x 42" H

Optional Booklet Folder/Trifold Unit BF-730: (DF-7140)

Booklet Folder: supports 8.5" x 11", 8.5" x 14", 11" x 17"

Fold Booklet (staple): 16 lb. – 24 lb. Bond (60 – 90gsm)

20-sheets; 25 lb. – 28 lb. Bond (91 – 105gsm) 13-sheets;

Higher than 28 lb. Bond (Higher than 105 gsm) 1-sheet

Fold Booklet (no staple): 16 lb. – 24 lb. Bond (60 – 90gsm)

5-sheets; 25 lb. Bond – 72 lb. Index (91 – 120gsm) 3-sheets;

32 lb. Bond – 110 lb. Cover (121 – 256gsm) 1-sheet

Trifold: supports 8.5" x 11" only: 16 lb. – 24 lb. Bond

(60 – 90gsm) 5-sheets; 25 lb. Bond – 72 lb. Index

(91 – 120gsm) 3-sheets; 16lb. – 28 lb. Bond

Optional Multi-Bin Mailbox MT-730(B): (DF-7140) 7 Trays; supports: 16 lb. Bond – 90 lb. Index (60 – 163gsm); Stack Capacity per bin: 100-sheets: 5.5" x 8.5", 8.5" x 11"; 50-sheets: 8.5" x 14", 11" x 17"

OPTIONAL 4,000 SHEET FINISHER DF-7150₄

Stack/Staple Capacity: Main Tray (A): 4,000-sheets; Sub Tray (B): 200-sheets/100-sheets (up to 20 lb. Bond [80gsm])

Paper Size: 5.5" x 8.5" – 12" x 18"

Paper Weight: 14 lb. Bond – 166 lb. Index (52 – 300gsm)

Edge Staple Position: 3 Positions: Top Left, Bottom Left, Center Bind

Optional Punch: PH-7A 2/3 Hole Punch Unit, supports 5.5" x 8.5" – 12" x 18"; 14 lb. Bond – 166 lb. Index (52 – 300gsm)

Dimensions: 29" W x 26" D x 42" H

Optional Booklet Folder/Trifold Unit BF-9100: (DF-7150)

Booklet Folder: supports 8.5" x 11", 8.5" x 14", 11" x 17"

Fold Booklet (staple): 14 lb. – 24 lb. Bond (52 – 90gsm)

20-sheets; 25 lb. – 28 lb. Bond (91 – 105gsm) 13-sheets;

Higher than 28 lb. Bond (Higher than 105 gsm) 1-sheet

Fold Booklet (no staple): 14 lb. – 24 lb. Bond (52 – 90gsm)

5-sheets; 24 lb. Bond – 28 lb. Index (91 – 105gsm) 3-sheets;

28 lb. Bond – 140 lb. Index (106 – 256gsm) 1-sheet

Trifold: supports 8.5" x 11" only: 14 lb. – 24 lb. Bond

(52 – 90gsm) 5-sheets; 25 lb. Bond – 28 lb. Index

(91 – 105gsm) 3-sheets; 16lb. – 28 lb. Bond

OPTIONAL INSERTER UNIT IS-7100

Paper Capacity: 250-sheets x 2 Trays

(based on 20 lb. Bond [80gsm])

Function: Feeds Front, Back Covers or Sheet Insertion

Paper Size: 5.5" x 8.5" – 12" x 18"

Paper Weight: 14 lb. Bond – 166 lb. Index (52 – 300gsm)

Dimensions: 27.6" W x 24.2" D x 52.4" H

OPTIONAL Z-FOLD UNIT ZF-7100₅

Fold Type Supported:

Z-Fold: 1-sheet folded (18 – 28 lb. Bond [64-105gsm])

Bi-Fold: 1-sheet folded (18 – 28 lb. Bond [64-105gsm])

Inner/Outer Trifold (based on 8.5" x 11R):

3-sheets (up to 20 lb. Bond [64-74gsm])

2-sheets (up to 24 lb. Bond [70-90gsm])

1-sheet (up to 28 lb. Bond [91-105gsm])

1-sheet (for all other size sheets)

Paper Sizes Supported:

Z-Fold: 8.5" x 11R" – 11" x 17"

Bi-Fold: 8.5" x 11" – 12" x 18"

Trifold: 8.5" x 11" – 11" x 17"

Dimensions: 8.2" W x 28.7" D x 38.5" H

ADDITIONAL OPTIONS

AK-7110 Bridge Unit Attachment Kit, AK-7120 Bridge Unit Attachment Kit (ZF-7100), JS-7100 Job Separator, HD-16 Large Capacity HDD (1TB), Banner Guide 10, Internet Fax Kit (A), Card Authentication Kit (B), Dual NIC (IB-53), Extended Range Wireless LAN NIC (IB-51), Thin Print option (UG-33), Printer Emulation option (UG-34), DT-730(B) Document Tray, Scan Extension Kit (A) for Text Searchable PDF; MS Office File, Keyboard Holder 10, Numeric Keypad (NK-7130), Cabinet Stand, EFI Printing System 17 - Fiery Controller

¹ Requires PF-7140

² Only 1 Document Processor can be installed

³ Only 1 Output Option can be installed

⁴ Requires Bridge Unit Attachment Kit (AK-7110)

⁵ Requires Bridge Unit Attachment Kit (AK-7120)

Specifications and design are subject to change without notice. For the latest on connectivity visit kyoceradocumentsolutions.ca. TASKalfa, PRESCRIBE, Kyocera Net Manager, Kyocera Net Viewer, Kyocera Device Manager, PDF Direct Print, Command Center RX, and KX Driver are trademarks of The Kyocera Companies. Mac OS and AirPrint are trademarks of Apple, Inc. Mopria is a trademark of Mopria Alliance, Inc. Windows is a trademark of Microsoft, Inc. All other trademarks are the property of their respective owners.



Rudolph Singh
 rudolph@rjbmachines
 905-405-1549
<https://rjbmachines.ca>

Kyocera Document Solutions Partner

KYOCERA Document Solutions Canada
 6120 Kestrel Road, Mississauga, ON L5T 1S8
 Tel: 905-696-4425



kyoceradocumentsolutions.ca